

Monochronicle Artist Profile

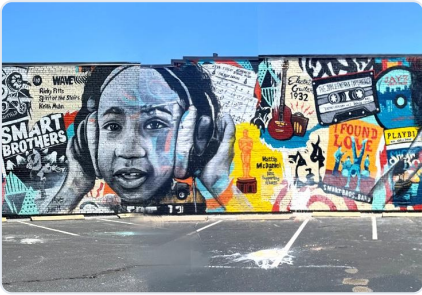
Generated on June 17, 2026, 1:42 AM | <https://monochronicle.com/artist/bradyblack/report.pdf>

OVERVIEW

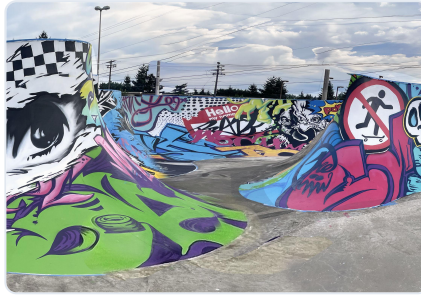
bradyblack

Worldwide

Gallery



2 BBlack
 "Listen", Wichita, KS. 2025, Acrylic and Spray Paint, 30' x 200'. \$32,000. Harvester Arts. A community created mural with 200 people with the background highlighting 10 historical Wichita artists while the foreground featured 3 children from area



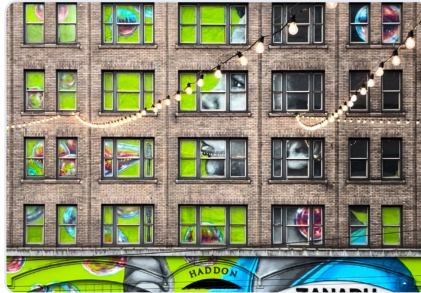
Sprinkr pano copy
 "Sprinker Skate Park", Tacoma, WA. 2025, Acrylic and Spray Paint, variable skating surface totaling 8,000 sq ft (5000sq ft, 2025 -3000sq ft June, 2026). \$110,000. The piece recalls skate decks and street culture.



3 BBlack am
 "Future Vision", Seattle, WA. 2025, Acrylic and Spray Paint, 30' x 75'. \$20,000. City of Ballard. The background is a nautical map of the local area the mural is located in and the foreground recalls the maritime history of Ballard.



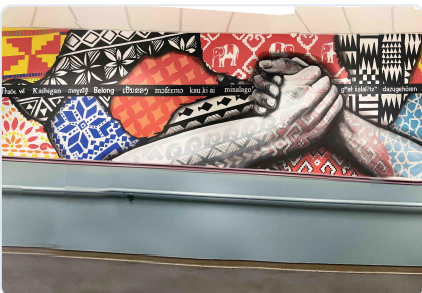
4 BBlack
 "Ice House", Seattle, WA. 2025, Acrylic and Spray Paint, 30' x 75'. \$12,000 Belltown Mural Fest. A community painted mural with 70 people with the background is a collection of historical Seattle grunge concert posters.



5 BBlack
 "Look Up", Seattle, WA. 2024, Acrylic and Spray Paint, 125' x 60'. \$15,000. Seattle Downtown Plan. A 6 story mural hiding in plain sight primarily using the windows and sidewalk of a vacant building in downtown.



7 BBlack



puyallup copy



6 BBlack



Metropole



West Seattle



black 005



black 004



10 BBlack