

Monochronicle Artist Profile

Generated on June 17, 2026, 1:43 AM | <https://monochronicle.com/artist/gbemigashodunkegmailcom/report.pdf>

OVERVIEW

gbemigashodunke@gmail.com

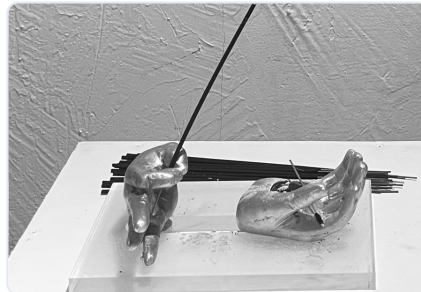
Worldwide

Gallery



adidassss

For the Lagos flagship opening, I brought an Adidas character to life through sculpture. The piece reflects its cultural impact on dreamers, with a cloud symbolising the creative heights one can reach.



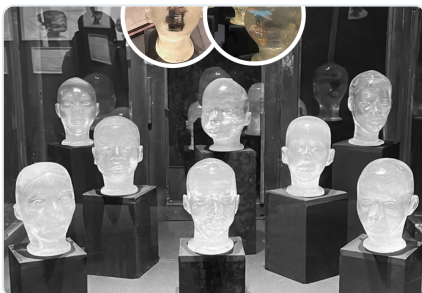
TURARI

Purifier (Owo Turari) is a gesture-based sculpture where hands channel cleansing energy. Incense flows through the form, turning human touch into a ritual of renewal—transforming smoke into a symbol of healing and rebirth.



HAND

Owo Gbe ("Lift") is a sculptural table of fiberglass, aluminum, and acrylic. Finger-formed grips hold its structure in balanced asymmetry. It transforms a lifting gesture into function, celebrating human creativity as something AI cannot replicate.



its all in my head

Commissioned to create 13 clear acrylic sculptures of victims, each embedding metaphors of progressive healing and personal paths forward. The project was funded by the National Geographic Society (\$100k).



138A0181

Creative duo Cherif Douamba and Ottawa Kwami collaborated with me to create a mascot for their acclaimed short film *ONE DAY*. Through this sculpture, SIOH explores themes of brotherhood and manhood.