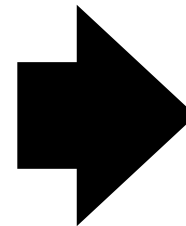
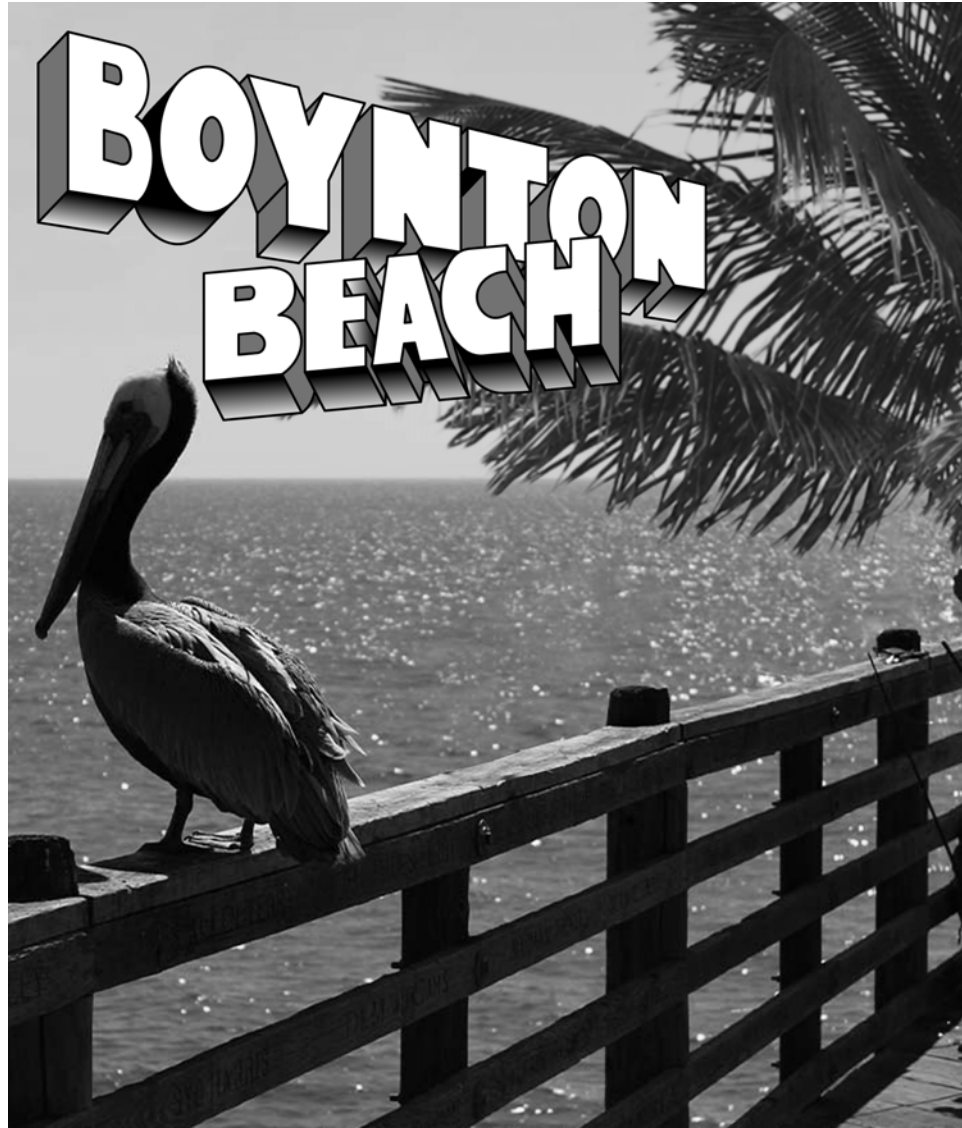


## ORIGINAL ARTWORK

Boynton Beach is known as the "Gateway to the Gulf-stream" - this art collage includes the open sea, pelican, boardwalk, and a palm tree.



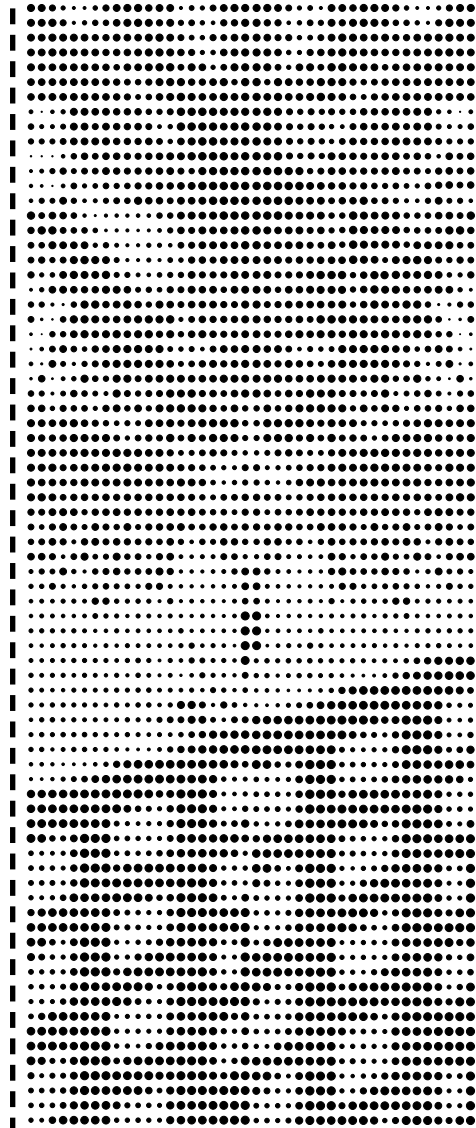
## WEST FACADE

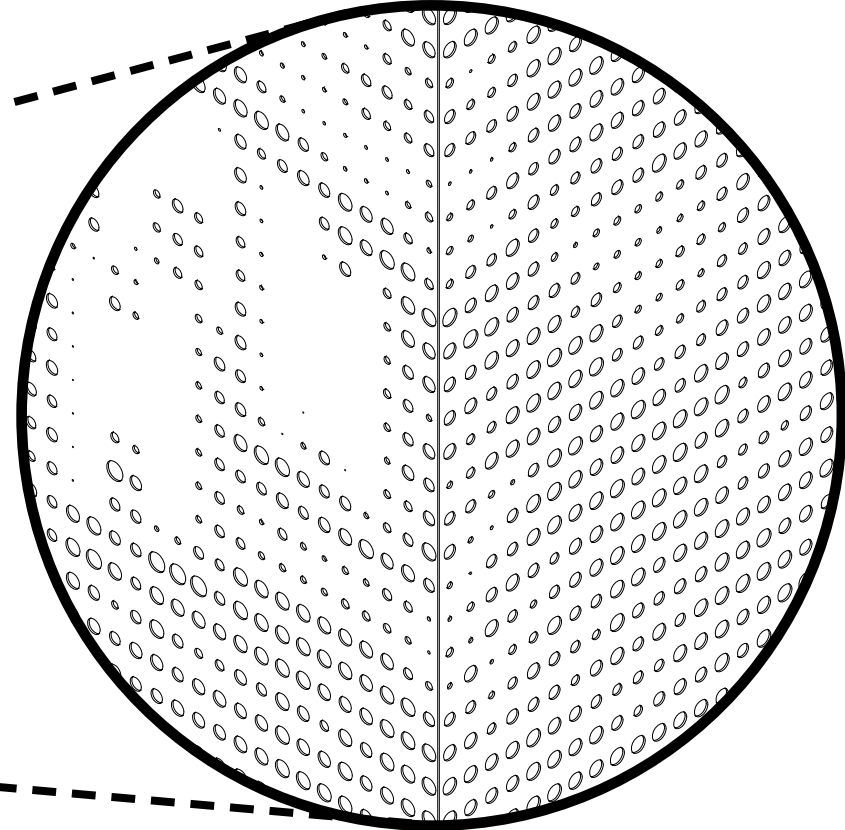
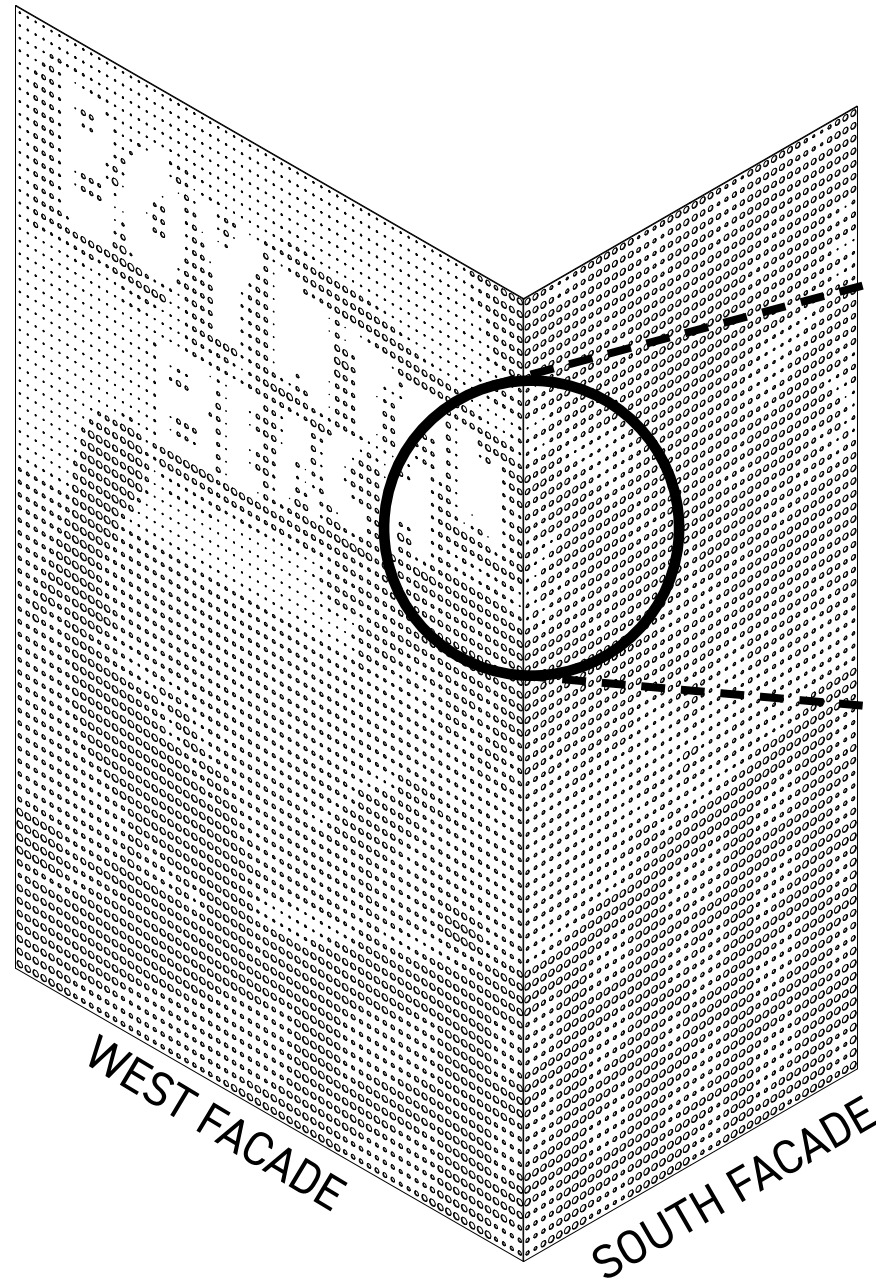
Features the main image with "Boynton Beach" in vintage-style postcard font



## SOUTH FACADE

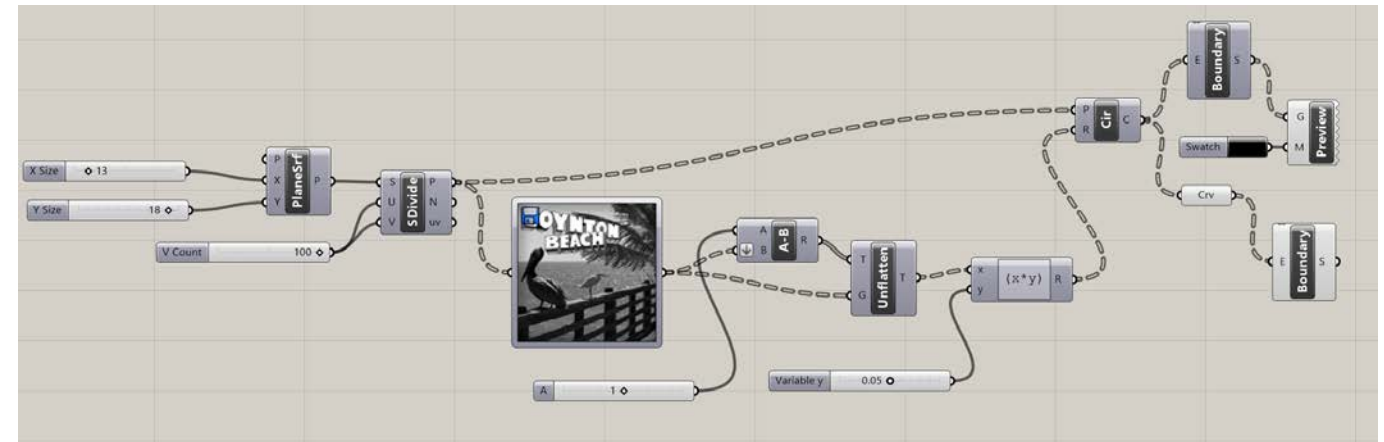
Features remaining boardwalk with palm tree





### DETAIL

Perforations were created with Rhino + Grasshopper to control circle radius and variations.



RENDERING



RENDERING





## About the Artist

Jordan is a Milwaukee-born independent designer, Founder of The Landscape Library, previous employee of Bjarke Ingels Group (BIG) in NYC and graduate of UW-Milwaukee.

Following his time at BIG, Jordan freelanced for award-winning landscape architects for 2 years before founding The Landscape Library - the leading residential landscape architecture and design platform publishing articles and teaching top softwares for landscape design professionals.

## CV

**Degrees:** AAS in Horticulture and Landscape Design + BSAS in Architecture at UW-Milwaukee SARUP

**Past Experiences:** Bjarke Ingels Group NYC / Vetter Architects / Kahler Slater Architects / Community Design Solutions / Heller & Associates / Kujawa Enterprises

**Academic Accolades:** Co-Founder SAMPLE Journal / Selected a Marcus Prize Student for Studio with Jeanne Gang of Studio Gang / SURF Grant with Johnsen Schmalming Architects for Studio Publication / SURF Grant for Exhibition Design with Mo Zell (Chair of Architecture at SARUP, UWM)



Milwaukee Art Mural on 2nd Street (shortlisted)



Penang South Islands with Bjarke Ingels Group



Pop-Up Outdoor Art Gallery with Vandalized Plywood (proposed)



Art Installation: Reflective Mirrors Placed on Old Warehouse



Mural, Town of Bethel, CT (proposed)



Street Mural Proposal at an Existing Bike Trail